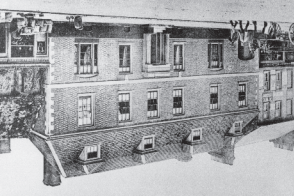


MORE INFORMATION ON THAME'S FAMOUS FACES INSIDE



JOHN
FOTHERGILL
The Spread
Eagle

JAMES FIGG
The James
Figg Pub



The plaque marks the site of a Mansion House built in 1572 which, in turn, housed Royalists, Huguenots, French Officers in the Napoleonic Wars, the Oxford County School for Boys from 1840 – 1908, and then became Thame Girls Grammar School. The school moved to Wheatley in 1948 and the historic mansion was demolished in 1965.

MANSSION
HOUSE



This plaque commemorates the site of Rycotewood College, which was established by Cecil Michaeils in 1938 when he bought the former Thame Workhouse. The buildings were requisitioned during World War II to become the administration offices and barracks for RAF Thame, the airfield being at Haddenham a few miles away. After the war the buildings were adapted for the school, later becoming Rycotewood College, which thrived and became a world-renowned centre for crafts, especially fine furniture and agricultural machinery. Increasing costs caused its closure in 2004, but its ethos is still going strong at Oxford College as the Rycotewood Furniture Centre.

RYCOTEWOOD
COLLEGE

ROBIN GIBB
Prebendal

Follow the walking route below, starting at 1, The James Figg Pub in the town centre and returning to the Spread Eagle Hotel



The plaque commemorates the occasion when HRH the Princess Royal visited the market to celebrate the 800th Anniversary of the Thame Market Charter. The Charter issued by King John in 1215 gave the Bishop of Lincoln the right to hold a weekly market and an annual fair in Thame. Both events still carry on to this day. The market would have been held throughout the town with dairy products in the Buttermarket and cereals in the Cornmarket. It was normal for monarchs to issue or re-issue charters to establish their sovereignty and so it is probable that this was not the first charter for Thame but it is the earliest one surviving.

MARKET
HOUSE

HENRY
BODDINGTON
14 Wellington
Street

JOHN
HAMPDEN
105 High
Street

ALFREDO
CAMPOLI
39 North
Street

W B YEATS
42 High
Street

FRANK
KIRBY
Wavertree
House

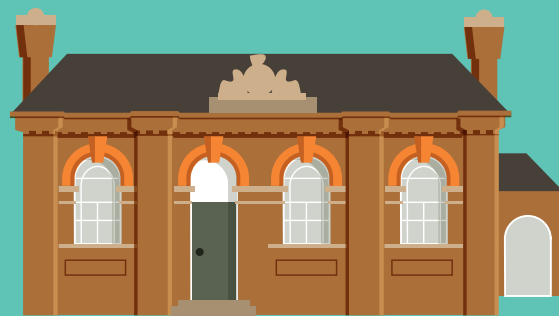
EXPLORE THAME FURTHER



Follow our 'Historic Town Trails'

Thame has three other walking trails available which allow you to explore the town's past with the aid of markers set into the pavement. Each takes about 1 – 1.5 hours to complete.

Printed versions are available at Thame Town Council Information Centre in Thame Town Hall or download from www.thametowncouncil.gov.uk/visit-thame/town-trails/



Visit Thame Museum

Delve even deeper into over 5000 years of Thame's interesting heritage. Housed in the old Court House, the Museum tells the story of the town and its people with displays linked to Thame's past, illustrating life in the community from Neolithic times to present day.

It also has a large photographic collection and runs an active programme of talks and exhibitions.

www.thamemuseum.org
Various opening hours. Free entry
Find Thame Museum at 79 High Street

Take a gentle walk around Thame to explore the plaques identifying significant locations and famous people associated with this historic market town. Some of the plaques form part of the wider Oxfordshire Blue Plaques Scheme

Visit the locations in numerical order for an almost circular route that will take you under 1 hour, finishing in the town centre where you can enjoy the delights Thame has to offer.



The Oxfordshire Blue Plaques Scheme promotes recognition and awareness of people, places and events that have been of lasting significance in the life of Oxfordshire or more widely.

With thanks to the following who have helped to fund and create this leaflet



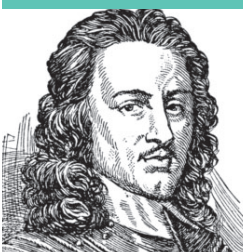
THAME
Town Council



Walking Routes

THAME COMMEMORATIVE PLAQUES

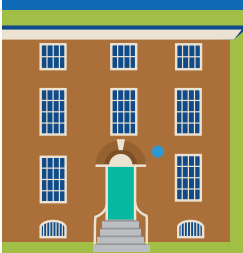
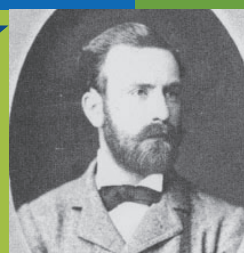
Explore the plaques identifying significant locations and famous people associated with this historic market town.



ALFREDO
CAMPOLI
39 North
Street



FRANK
KIRBY
Wavertree
House



THAME HERITAGE WALKING TRAIL

THAME'S FAMOUS FACES

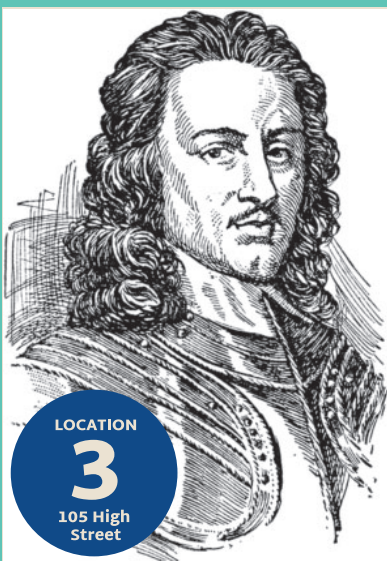
From musicians to boxers, publicans to poets, these are notable people with Thame associations over more than four centuries.

JAMES FIGG 1684-1734

James Figg is recognised as the first "Champion of England". Born in Thame, he gained a local reputation at prize fighting, making his headquarters at the Greyhound Inn (now re-named in his honour), but was as proficient with a stick and sword as with his bare fists. At Southwark Fair he kept a great booth on the bowling green where he entertained all day, and by 1719 was challenging all comers. Regular prize fights were held at the Boarded House in the Bear Garden at Marylebone Fields, where he opened an academy of arms. Figg was a stalwart figure, who was always ready to accept a challenge. He died in London and is buried at the Parish Church of St Marylebone.



LOCATION
1
The James Figg Pub



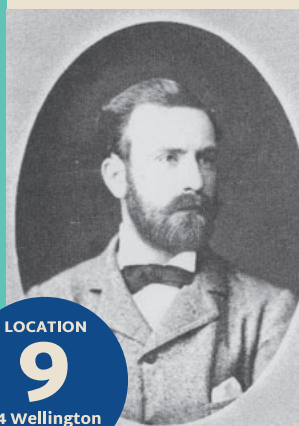
LOCATION
3
105 High Street

JOHN HAMPDEN 1594-1643

John Hampden was born into a prominent Buckinghamshire family and was sent to the free Grammar School in Thame at the age of six. After studying at Oxford he became MP for Buckinghamshire. He opposed the Ship Money tax being imposed by Charles I and was imprisoned for refusing to loan the King money. As Colonel Hampden he recruited and led a regiment supporting Parliament in the Civil War. Unfortunately, during a battle at Chalgrove, he was wounded and died on 24th June 1643 at a house in Thame High Street. Many people consider that, had he survived, he would have been the leader of the Parliament and, for that reason, he is often known as "The Patriot".

HENRY BODDINGTON 1831-1886

Henry Boddington was born at Thame Mill, the son of John and Elizabeth Boddington, miller. His father became master of the Workhouse in Thame prior to the family moving to Manchester in 1832. At the age of 19, Henry was employed at Strangeway's Brewery as a commercial traveller. He progressed through the brewery and in 1853 became the sole owner, after which the business boomed and was renamed Boddingtons Brewery. By 1877 the company was brewing 100,000 barrels a year. Henry retired to Silverdale, Lancashire and when he died, age 72, he left nearly £20m in today's money.



LOCATION
9
14 Wellington Street



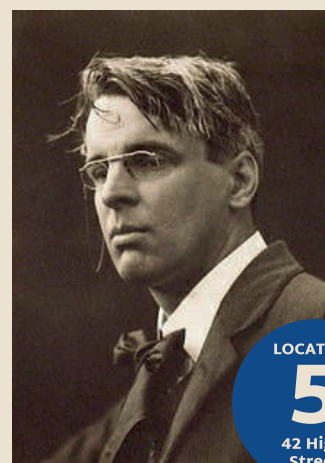
LOCATION
4
Wavertree House

FRANK KIRBY VC 1871-1956

Frank Howard Kirby was born and lived his early life in Thame but was educated at Alleyn's School in Dulwich before returning to Thame to work in his father's ironmongery business. He enlisted in the Royal Engineers in 1892 and, with the rank of Corporal, was sent to serve in the South African War in 1899. He was awarded the Victoria Cross for an action in which he charged directly back into enemy fire to rescue a comrade whose horse had been shot. He rose to the rank of Regimental Sergeant Major before being commissioned and transferred to the Royal Flying Corps, with which he served in France in WW1. When he retired in 1926 Frank held the rank of Group Captain in the RAF and had been appointed a Commander of the British Empire.

W B YEATS 1865-1939

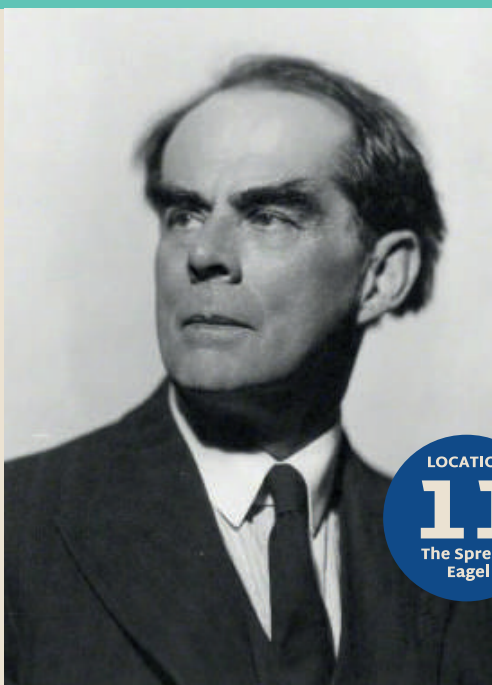
William Butler Yeats, the son of a Dublin painter, is often referred to as Ireland's finest literary poet. He attended school in London with vacations in Sligo, Ireland, which was the setting for many of his poems. His early work centres on Irish mythology and themes, and is mystical and lyrical. After his marriage he moved to England and to Thame in 1921, where his son was born. Yeats ultimately became a respected public figure, a member of the Irish senate and winner of the 1923 Nobel Prize for Literature. He died in the South of France, but was buried in Sligo.



LOCATION
5
42 High Street

JOHN FOTHERGILL 1876 – 1957

After an unhappy schooling and an early life studying art, John Rowland Fothergill surprised all his friends when he bought the Spread Eagle in 1922. Here he found that he possessed many (though not all) of the attributes of an outstanding innkeeper. He was an excellent chef, a connoisseur of wine, an early campaigner for 'real food' and cared passionately about the quality of the furnishings. Yet the success of Fothergill's enterprise depended first and foremost on his intriguing, volatile and provocative personality. He had a clear idea of the kind of clientele he wished to attract, and those who were unwelcome. He left the Spread Eagle in the 1930s a wiser but not wealthier man and is remembered essentially for his book "A Diary of an Innkeeper".

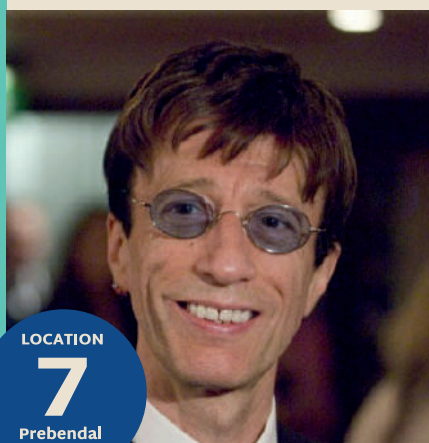


LOCATION
11
The Spread Eagle

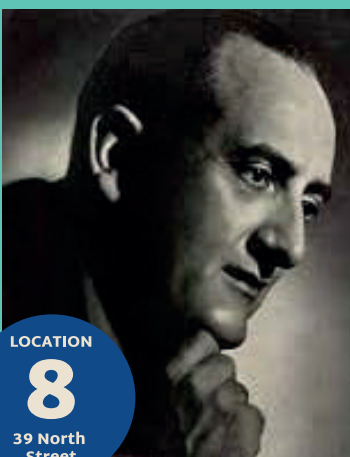
ROBIN GIBB 1949-2012

Robin Hugh Gibb was born on the Isle of Man, then moved to Australia in 1958 with his family. He performed with his older brother Barry and twin brother Maurice as the Bee Gees, achieving some hits in Australia before moving to England in 1967, and by the late 1970s the Bee Gees had become one of the top pop acts in the world, riding the disco craze. He lived at the Prebendal House in Thame, which he described as his favourite home and where he was

his most relaxed, for over 25 years. Despite his determination through a long battle with cancer he was unable to overcome his illness and died on 20th May 2012. He is buried in St Mary's churchyard, Thame, close to the Prebendal House.



LOCATION
7
Prebendal House



LOCATION
8
39 North Street

ALFREDO CAMPOLI 1906-1991

Born in Rome, Alfredo Campoli was the son of an orchestral leader and a violinist. The family moved to London in 1911, where Alfredo learned the violin from age four and, at the age of ten, the young prodigy made his debut as a soloist. He was a very successful concert artist and toured widely with his own orchestra. Campoli was a greatly loved and respected performer whose Italian singing style of playing was coupled with a dazzling technique and a warm, sweet, beautiful tone. He retired to Thame in 1986, where his wife had been born, and died suddenly in 1991.