



THAME
Town Council
Splash Pad Project Proposal



Why Offer The Sponsorship?

- Family in Thame
- As a resident want to add value
- Company Awareness/Perception
- Community and Social Value Commitment



Who Are SMS Environmental?



SMS Environmental are one of the UK's largest providers of full water and air hygiene treatment services.

We maintaining long term relationships with a focus on the simple principle of achieving what we say, to the standard we say, when we say we'll do it.

10% Turnover - £5,500,000
SMS Environmental are in the UK's top 10% of companies within the water treatment sector

Full national response via 4 regional offices in UK South (HQ), North, Wales and Scotland.

Over 100 multi disciplined employees (inc. authorising and chartered engineers, micro biologists & chemists, NEBOSH & IOSH consultants)

we advise
Our team of consultants offer impartial and competent Legionella risk assessments, audits additional advice and training.



we prevent
We can provide every aspect of control scheme management & PPM. Ensuring your environment runs smoothly so you can focus on other areas of your business.



we react
We respond to the breakdown of critical operational services 24/7. Our transparent reporting methods ensure you keep informed of our progress and performance.



THAME Town Council | Splash Pad Project Proposal | SMS Environmental

Our Capability

SMS Environmental Ltd are a full-service provider in all water & air related solutions but particularly for legionella control and safe water management solutions. Our core activities include:

- Water**
 - Cleaning, dosing and disinfecting water systems
 - Monitoring, flushing, sampling and all remedials
 - Chemical Cleaning & Supply
- Air**
 - Full Air Hygiene Services
 - Air Conditioning Installation and Maintenance
 - Ventilation hygiene audits
- Consultancy**
 - Legionella & Water Safety Risk Assessments
 - Authorising Engineers for water safety groups
 - Teams specialising in OSH
- Training**
 - CIBSE accredited legionella awareness training
 - CIBSE Accredited Seminars
 - 'Classroom' style training for Opuz (SaaS)



THAME Town Council | Splash Pad Project Proposal | SMS Environmental

Our Competence

'Only installers with the appropriate qualifications, regulatory knowledge and competence should be used to install and maintain water installations'.

Fully UKAS Accredited & Certified

- ISO 9001 - Quality
- ISO 14001 - Environmental
- OHSAS 18001 - Health & Safety
- ISO 27001 - Data Security
- ISO 17020 - Inspection Services

Water Safe QUALITY ASSURED

- ✓ A defence if challenged by a water supplier enforcing the Water Fittings Regulations and Byelaws
- ✓ Ensures work meets the highest standards
- ✓ Ensures engineers have specific training in Water Fittings Regulations and Byelaws
- ✓ Required to put our work right if it does not meet the legal requirements.

For your peace of mind we are annually audited and hold full category membership in the Legionella Control Association as a provider of all water treatment and hygiene services.



THAME Town Council | Splash Pad Project Proposal | SMS Environmental

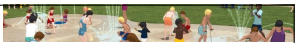
Our Clients

Peace of Mind

9,000
The number of water hygiene tasks carried out by SMS Environmental/month

+700
Customers currently using SMS Environmental





Financial Assurance

"We are one of only a few water treatment companies to hold Professional Indemnity Insurance. It protects and Insures our clients against any advice given by SMS and our staff."

SMS ENVIRONMENTAL LIMITED	
04243379	
04243379	04243379
04243379	04243379
04243379	04243379

EMPLOYER'S LIABILITY INSURANCE

Limits of liability £10,000,000

PUBLIC LIABILITY INSURANCE

Limits of liability £10,000,000

PRODUCTS LIABILITY INSURANCE

Limits of liability £10,000,000

PROFESSIONAL INDEMNITY INSURANCE

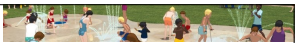
Limits of indemnity £5,000,000

Blank lined writing area for notes.



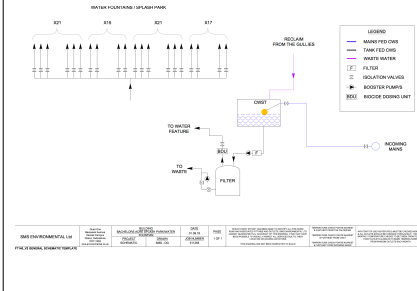
Examples of Experience & Assurance

Blank lined writing area for notes.



Experience & Assurance

Windsor & Maidenhead

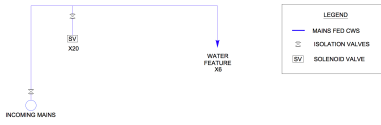


Blank lined writing area for notes.



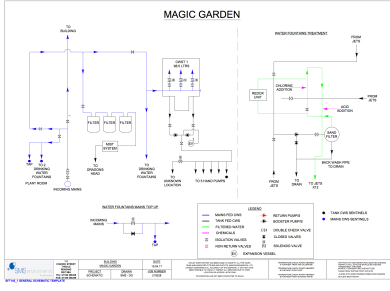
Experience & Assurance
Oxford City Council

HINKSEY SPLASH PARK





Experience & Assurance
Hampton Court Palace



Project Planning

Splash Pad One Off Installation Costs

- CAD design pack comprising of anchor detail, X-Y positioning, drain and jet levels, concrete falls and EPDM colour plan view layout
- Design Engineer to overlay the positioning of the play products on the Splashpad, advice on the interface with the supplying water feeds and outline fixing down methodology
- Liaison with Water System Contractor and attendance at one design meeting. Utigate Installation Team to set out cast in anchors to Utigate advised X-Y positions
- Play items - supply and fit VOR 0301 Bucket Trio and ground jets
- Supervise the Water System specialist to hydraulically commission scheme i.e. set up flows and sequencing etc. and to sign off.
- Project Management of our installation team
- EPDM Surfacing – Simple design 3 colours (100 sqm)

Total: £36,243.21 + VAT
Groundworks Total: £8,000

Total SUM: £44,243,21 + VAT



SMS Sponsorship Covers:

Critical stages of construction

- SMS will act as the project managers for this project, including organising the initial pre start meeting with all involved in the project, including organising of the sub-contractors.
- Produce a construction phase plan, and put together a health and safety file for this project to comply with CDM regulations.
- Supply welfare and first aid facilities for this project.
- Supply and install the plant room for the water system to be housed in.
- Supply and install the water system that will supply the splash pad which will include the break tank, booster pump set and all associated pipework to the splash pad.
- Make all necessary connections to the mains water supply.
- Supply drainage and connect to the storm drain.
- Make all necessary electrical connections for the splash pad.
- On completion of the installation carry out a full UKAS 17020 accredited water risk assessment.
- Also on completion carry out a full sanitisation of the splash pad and take initial total viable count water samples to prove water quality.

Materials costs: £9,000.00 + VAT
Labour costs: £6,000.00 + VAT

Ongoing maintenance costs for the splash pad;

- Commissioning of the splash pad before operation in the summer months (May – September)
- Annual sanitisation of the splash pad at the commissioning stage.
- Monthly total viable count water samples of the splash pad when in operation.
- Respond to and fix any mechanical failures regarding the water system for the splash pad.
- Annual review of the UKAS 17020 accredited water risk assessment.
- Decommissioning of the splash pad after the summer months and secure for the winter.

Ongoing maintenance costs per annum: £5,000.00 + VAT



Added Value

- Risk Assessments
- Written Control Schemes
- Implementation of control schemes
- Recording Keeping (logbook)



"THE RISK ASSESSMENT REMAINS THE STARTING POINT FOR LEGIONELLA CONTROL; IT SHOULD BE CONSIDERED A LIVING DOCUMENT AND SHOULD BE REVIEWED ON A REGULAR BASIS"
Revised Approved Code of Practice (ACOP) 18 Legionnaires' Disease. The Control of Legionella Bacteria in Water Systems



Any Questions?
